

ISSUE:

Issued for Permit
08.05.2016

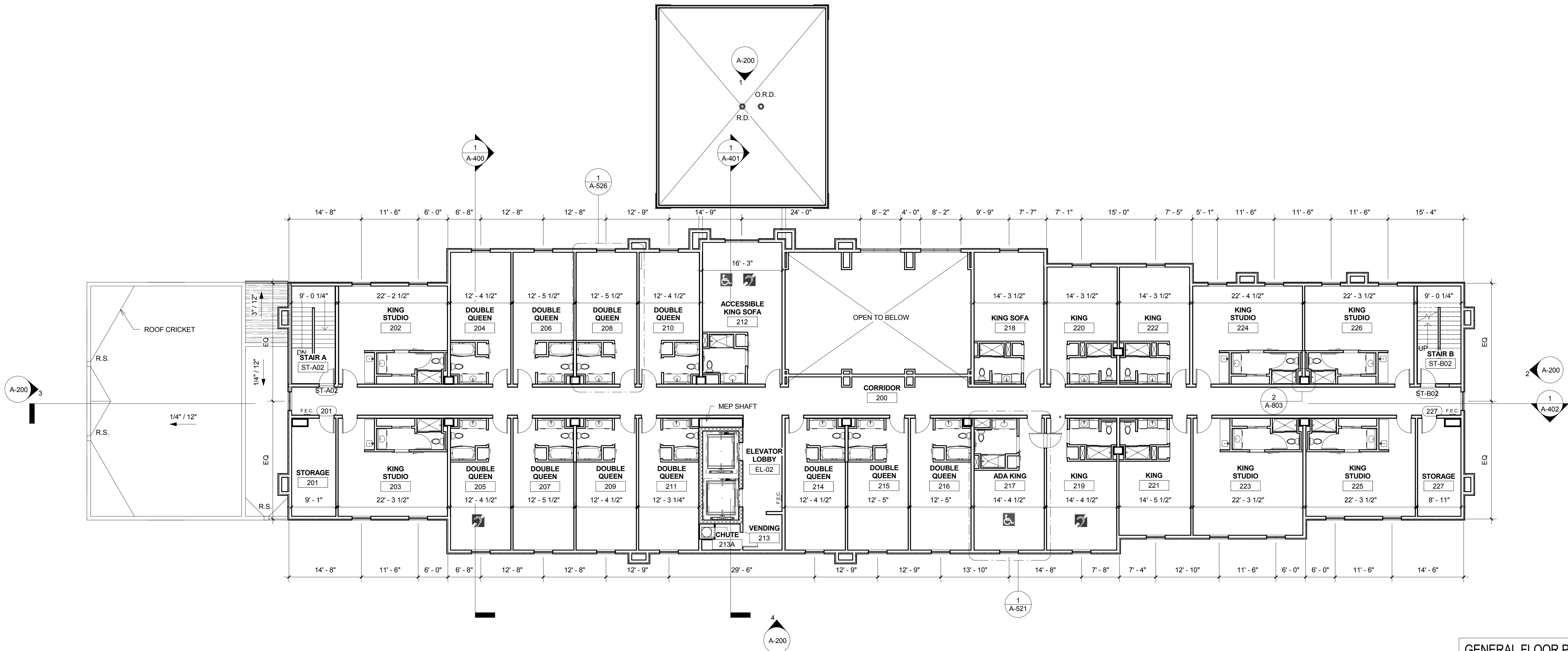
PROJECT: 16-018

Hampton Inn & Suites
New Stanton, PA 15672

OWNER:

Stanton Hospitality LLC
52 Blueberry Lane,
Grove City, PA 16127

THESE DRAWINGS ARE FOR REVIEW OF DESIGN AND SCOPE DESCRIPTION ONLY. NO REPRESENTATION IS MADE TO THE ACCURACY OF THE DRAWINGS WITH RESPECT TO EXISTING DIMENSIONS OR CONDITIONS. ALL CONSULTANTS AND CONTRACTORS MUST VERIFY ANY AND ALL DIMENSIONS AND CONDITIONS WHICH ARE CRITICAL TO THEIR WORK. THESE DRAWINGS ARE INSTRUMENTS OF SERVICE AND ARE THE INTELLECTUAL PROPERTY OF JMAC ARCHITECTS. ANY UNAUTHORIZED USE OR REPRODUCTION IS PROHIBITED.



1 Second Floor Plan
3/32" = 1'-0"

GENERAL FLOOR PLAN NOTES

- ALL DIMENSIONS SHOWN ARE FROM
A. FACE OF STUD
B. FACE OF EXTERIOR SHEATHING
C. FACE OF BLOCK
D. FACE OF INSULATED CONCRETE FORM UNIT
E. CENTERLINE OF BEAM
F. CENTERLINE OF DOORS AND WINDOW -
ROUGH OPENING
- PLYWOOD SHALL BE FULL 4' X 8' SHEETS INSTALLED PERPENDICULAR TO FRAMING.
- EXTERIOR WALLS TO BE 2X6 STUDS W/ DOUBLE TOP PLATES
- PARTITION TAGS, DOOR TAGS, AND DIMENSIONS FOR UNITS ARE SHOWN ON THE ENLARGED PLANS
- PROVIDE BLOCKING FOR GRAB BARS AT ALL BATHROOM FIXTURES AS REQUIRED. TYPICAL FOR ALL UNITS. SEE SHEET A-008 FOR LOCATIONS.
- SHEAR WALLS AND TRUSSES TO BE ENGINEERED, SEALED AND STAMPED BY PA LICENSED ENGINEER. PROVIDE HANGERS, HARDWARE, ANCHORING SYSTEMS, AND SHEAR WALL DETAILS ON SEALED, STAMPED DRAWINGS.
- SEE STRUCTURAL DRAWINGS FOR STRUCTURAL INFORMATION
- SEE LAYOUT DWGS FOR PARTITION TYPES.
- UNITS SHOWN ON OVERALL PLANS FOR REFERENCE ONLY. SEE A-500 SERIES FOR ENLARGED UNIT PLANS.
- GUESTROOMS TO BE "TYPE B" ACCORDING TO ICC A117.1-2009, U.N.O.
- SEE STRUCTURAL, MEP AND FIRE PROTECTION DRAWINGS FOR ADDITIONAL INFORMATION

No. Issue Date Project Status

Second Floor Plan

As indicated

A-102